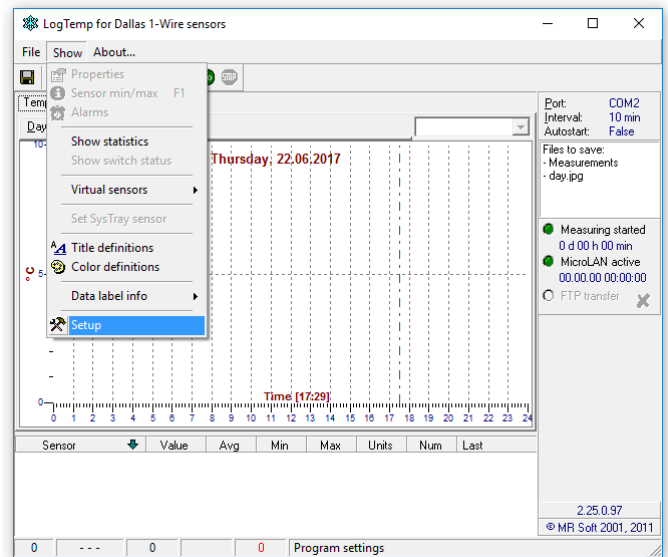


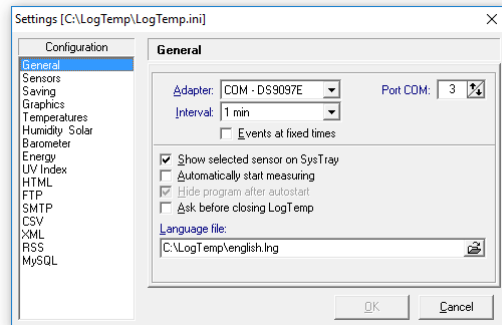
# LogTemp setup for USB Thermometer

Make sure you have installed Prolific (PL2303) driver for Windows and Maxim 1-wire driver.

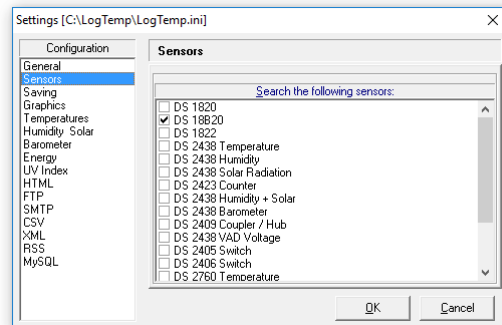
Open LogTemp main window and from its menu select Show > Setup.



Set COM - DS9097E adapter and appropriate COM port number.



In Sensors tab make sure DS 18B20 has a tick.



Commit changes by clicking OK and in main window click Go to start taking measurements.